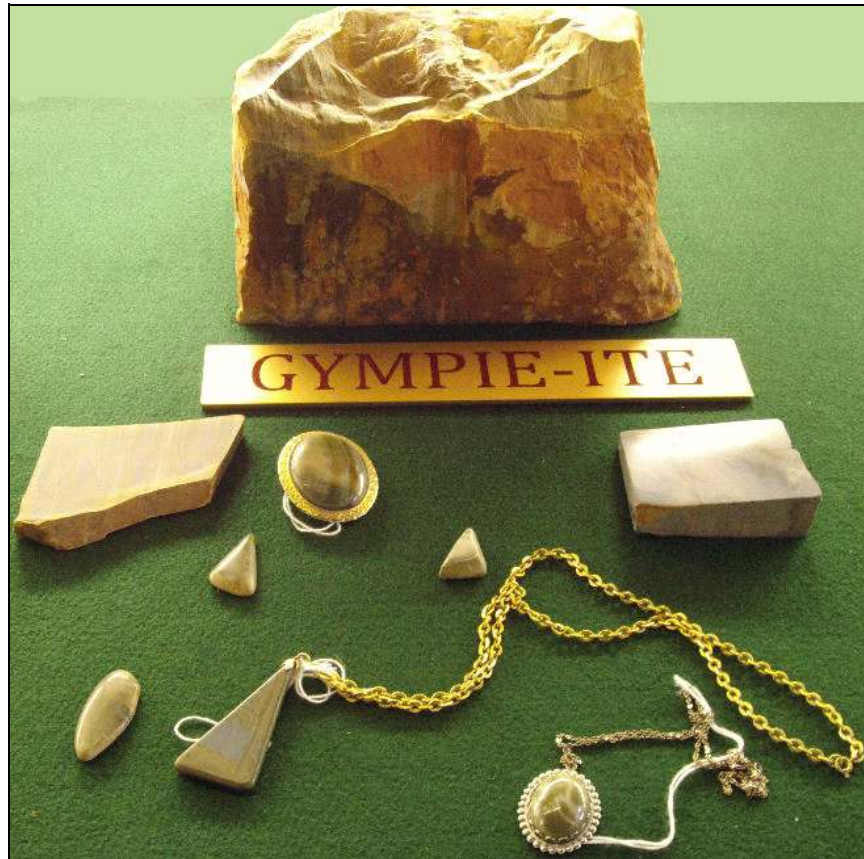


## FASCINATING FIND

### GYMPIE-ITE



*Gympieite may be a term for someone from Gympie, but it also refers to a gemstone mineral unique to our region, which is found just north of Gympie.*

*It is a type of green/blue/grey chert, composed of sedimentary microcrystalline silicate material laid down about 400 million years ago. The stone is very hard and takes a fine finish.*

*The large piece of quarried material shown was donated by Jack Pearce, and the polished pieces and jewellery were donated by Rose Sami.*

*They are on display in the tank. The museum also holds the Gympie Gem Club's extensive collection of rocks and minerals in the House next door to the church.*