



THE



NEWSLETTER

NO. 110 MAY 2017

**THE GYMPIE & DISTRICT HISTORICAL SOCIETY INC.**

215 Brisbane Road, GYMPIE. QLD 4570

PO Box 626, GYMPIE. QLD 4570

(07) 5482 3995, Fax: (07) 54825686

Email: [info@gympiegoldmuseum.com.au](mailto:info@gympiegoldmuseum.com.au) [www.gympiegoldmuseum.com.au](http://www.gympiegoldmuseum.com.au)

**ELECTED OFFICERS**

**President:**

**Frank Lightfoot**

Tel: 54833965

**Secretary:**

**Ralph Richardson**

Tel: 54839418

Mob: 0408616709

**Treasurer/Editor:**

**Marilyn Soanes**

Tel: 54845211

**Senior Vice President:**

**Max Travis**

Tel: 54812157

Mob. 0414015302

**Junior Vice President/**

**Historian:**

**Allan Blackman**

Tel: 54828828

Mob: 0428332291

**OTHER POSITIONS HELD:**

**Property Officer:**

**& Firearms Licensee**

**Ron Owen 54825070**

with **Assistant Jo Carson**

**Mob. 0414015302**

**Historian: Bennett Suthers**

**Tel. 54823315**

**Mob. 0412434961**

**Historian: Chris Kapernick**

**Mob. 0439535139**

# Museum Markets

at the Duck Ponds (Lake Alford)

1<sup>st</sup>, 3<sup>rd</sup> and 5<sup>th</sup> Sundays of each month

JUNE dates: 4<sup>TH</sup>, 18<sup>TH</sup> (7 a.m.-12 noon)

Site Bookings to Museum Café 54 823995

Come along and browse the markets  
for some bargains and catch up with friends!

The next performance of entertainment  
by the Gympie Museum Re-enactment Group  
will be 18<sup>TH</sup> JUNE 2017 at 9.30 a.m.



++++  
→ **Steaming Day first Monday of each month**  
++++

**COMING EVENT 2017**

**Annual Steam Festival**

**Saturday 30<sup>th</sup> September/ Sunday 1<sup>st</sup>/ Monday 2<sup>nd</sup> October (Queen's Birthday)**

*THE GENERAL MEETING* will be held on **WEDNESDAY 7<sup>TH</sup> JUNE 2017**

at 7.00 p.m. upstairs of the Gold Room. Business includes: Work Projects

## Noosa Museum Heritage Day...

The Noosa Museum Heritage Day was held on 6<sup>th</sup> May at Pomona. In attendance were the Noosa and District Pipes and Drums and the Cooroy Coastal Car Club Veteran Vehicles and a small number of stallholders. There were guest speakers with information on heritage to visitors.

Displayed is the Museum's 1942 International fire truck. This truck (R) was supplied as a lend lease vehicle during WW2. It was bodied by J Smith & Sons, Gympie, and is powered by a 6 cylinder OHV Blue Diamond engine, and was used predominantly in Gympie.

As a stallholder, Marilyn displayed promotional material and gold panning items for sale.



(L) The maroon coloured 1948 Ford Mercury 'Miss Emma' is a left hand drive vehicle

Car enthusiasts have a noticeable passion in their conversation describing the intricate functions of the mechanics of their vehicles.

(Right) Ralph is showing interest in **the bottle collection at the Noosa Museum.**

Since the arrival of the first timbergetters in the Noosa Shire in 1866, an endless variety of bottles have been available to householders. Pottery, stone, porcelain and earthenware containers have been used, but by far the most common material has been glass - in a variety of colours including green, blue, amber, mauve and clear.



The most common were food containers - soft drink, beer, pickles, pecks paste, honey, rolled oats, peanut paste, milk etc.

There are medicine bottles (including the attractive but notorious, blue castor oil bottle), some with the local chemist's name on them.

Poison bottles were mostly a dark colour, with raised ribbed sides so that they were easily recognised.

Early ink containers were often of stone or earthenware.

'Avon' bottles have become collections due to their many unique shapes and colours.

## Noosa Museum Heritage Day (Cont.)...

An elderly visitor to the Noosa Museum on 4<sup>th</sup> August 2016 related the story that her first job was working for a herbalist who every day would mix fresh herbs and potions in a mortar and pestle. Blue bottles and jars were used for any mixtures that were to be used externally and not ingested as they were POI SON!

**Sun Violet Bottles** mainly date from between 1895 and 1915, but may be even until the late 1940's.

The original bottle mix included manganese, which was used to clarify the glass.

As these bottles became exposed to the sun, the ultraviolet light reacted with the manganese to form a compound with the characteristic violet colour.

The depth of colour depends on the length of exposure and the amount of manganese in the bottle mix.

The change is not permanent and new bottles made from violet glass will be completely clear.

Information from Richard Irving, Adelaide Historical Bottle Club 1998

## Gympie's first...

**The first Gympie Show was held in 1877 on land now occupied by the Old Railway Station was known at its inception as the Gympie Agricultural, Mining, and Pastoral Society.**

There was no show in 1881, 1882 and 1883, because government bought land for railway station.

In 1884, the show moved to the present site after signing a deal with the turf club. Residents were upset at the move, saying it was too far from the centre of town.

The show used to have a procession from the centre of town to the event to open it.

The First World War stopped the show in 1916, in 1930 the Depression stopped the show, and there was no show from 1940-45 because of the Second World War.

Some items in the Museum's collections were entered in the Gympie Show as follows:

. In 1877 a framed second class certificate awarded to Miss E Dare for Second best Honiton Lace.

. First Class Certificate awarded to Miss S Hughes for crochet work in 1879

. Medal awarded 1899 to A J Ayers for the collection of ornamental plants.

. Medal awarded to E Baker for outline pencil drawing.

. Medal won by the Wide Bay Co-op Dairy association for the best box fresh butter in 1925.

. The Gympie Times Cup for second prize Junior District Group of Dairy Cattle 1924 won by F C Bull, Kybong.

. An aboriginal painting won first prize in the "Copy after Artist" section that was painted by R W Wright from the original by Dudley Wood.

. A framed photo from the Duganvale Jersey Stud 'Lynevale Sweet Crescent' with the Champion Butterfat Cow 1964 & 1965 by G W H Kidd.

**Gympie's first Private Aero Club Pilot's Licence holder was Clarence Noel Lewis** who was born 7.7.1909. The Licence was issued 9.4.1934 valid to 3.3.1935, and was signed by the Controller of Civil Aviation.

In the 1930's there was an aviation incident by Clarrie Lewis experiencing a forced landing without power, in a paddock in the Mothar Mountain area. His de Havilland cabin class bi-plane was damaged, and luckily he was not injured.

Information on C Lewis is in the transport section of the House.

This photo on the right was taken of Colin Joseph 'Col' Pratt's de Havilland Tiger Moth at Widgee in December 1958. Info from [Gympieaeroclub.wordpress.com](http://Gympieaeroclub.wordpress.com)



## Exhibits of interest...



A colonial red cedar chaise lounge was donated by Tess Stuart, it is in immaculate condition, and enhances other furniture including the Ambrose table in the Andrew Fisher House \*front room.

(\* I questioned myself if this is the correct term to use as there are so many other options such as sitting, living, lounge room and parlour! Ed.)

Chaise longue history:- The correct term is the “chaise longue” being French for “long chair.” A chaise lounge is seating for one individual, and can be placed in bedrooms, offices, living rooms and outdoors on patios.

An upholstered sofa is in the shape of a chair that is long enough to support the legs.

It is thought that the first blend of a chair and daybed originated in Egypt. The earliest known models were made from palm sticks lashed together with pieces of cord or rawhide. Later, Egyptian bed-makers introduced mortise-and-tenon construction and wood bed frames veneered with ivory or ebony.

Info from Wikipedia, the free encyclopedia

The Ambrose table, as it is fondly referred to, is the creation of Mr W G Ambrose who was Mayor of Gympie in 1907 and again in 1912.

Only timbers native to the Gympie region were used by Mayor Ambrose in the construction of this table.

The Ambrose family kindly donated this table to the Society, and restoration work was carried out by Mr Nev Miers of Excelsior Road, Gympie.

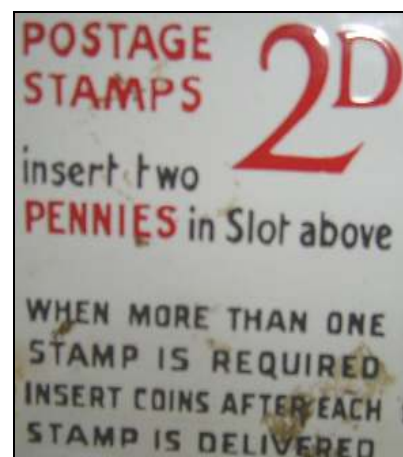
. Del Prado The Ultimate Collection of Cars donated by N. Buttery. Various model cars with the scale 1.43 are from early vintage to late 1990's. Some makes to mention are Model T Ford, Alpha Romeo, Chevrolet, Citron, Lamborghini, Mercedes, Peugeot, Porche, and Renault. Possibly in the future, with space permitting, this collection of seventy cars will be displayed.

As you readers will notice, these signs are pre 1966 (before decimal currency was introduced).

Post Offices had machines outside the building for customers to purchase postage stamps.



These baked enamel signs for purchasing 1D and 2D postage stamps will be placed in the Post Office section at the Communications building.



**Thankyou** to all the people who donate items to the Museum.

## Markets...



(L-R) Bill Moore, Ron Silk,  
and Alan Dyne

Stallholder  
Gympie Men's Shed  
at the Museum Markets  
on 30<sup>th</sup> April selling their various  
items of woodwork.

Anyone with spare time? The Gympie Men's Shed is the place to go. They are located in the old goods shed in Tozer Street, Gympie, meet on Monday, Wednesday and Friday from 9a.m.-12 noon, and welcome new members.

The friendly and relaxed environment is where skilled members can enlighten menfolk that are interested in woodworking - scroll saw, band saw, wood turning, and welding or just call in for a cuppa and a chat!

## Café at the Museum...

The Café catered for a large number of customers on Mother's Day. Extra tables were set up in the new entry area to make more room for people manoeuvring walking aides.

**Visitors can dine and enjoy the scenery and then take a leisurely stroll around the adjoining Lake Alford Park where there are a large number of resident birds - a few to mention are the Pacific Black Duck, Purple Swamphen, Black Swan, Black-faced Cuckoo, Australian White Ibis.**

## Museum News...

**The latest addition is the Harrison Lathe (ex Nestles) which is currently being cleaned before placement in the new workshop.**

**T S Harrison & Sons was founded in 1898 and in the year 1900 built their first Harrison Lathe in Yorkshire, England.**

**Harrison has a recognized worldwide customer reputation for super precision quality, long term reliability and universal serviceability. Lathes range from 13" to 21" swing and 25" to 120" centres in gear head.**



## Museum News (Cont.)...

\* **Book Launch** - Max attended the book launch in late April, and the key authors autographed a copy of the book that was purchased. There were many hours of research and typing in Gympie's Great War 1914 which was presented by the Gympie Family History Society. It is the first book in a series through the war years.

\* **Guided tours for May:** Theebine and Gundiah Schools (40), Hervey Bay Home Schoolers (60), Tin Can Bay School (40), Tullawong School (near Caboolture) (120), St James Lutheran College, Hervey Bay (58), Victory College (56). Self-guided tours from Chatsworth School (48), and Cooloola Christian College (24).

\* The Society was successful with a grant from the Gambling Community Benefits Fund for \$35,000 construction of a shed to house historic machinery.

\* Another successful grant was \$1,700 from Gympie Regional Council for machinery transport to the Steam Festival that will also be taking part in the Gold Rush parade.

\* **Condolances** are extended to Denise and her family for Simo (Allan) who passed away recently. Thinking of you in these sad circumstances.



Much has been achieved with the new additions to the Cafe.

This photo shows the side of the Café where the steps and a ramp connect to a path leading to the Tank.

The adjoining room on the right hand side is the toilet which is now in the construction process.

**Volunteer Days** are mainly Mondays and Tuesdays. Any enquiries regarding the collection can be addressed by admin. staff, a historian, or a committee member. As National Volunteer week was during the month of May - a big thankyou is extended to all the Volunteers for their efforts in contributing time and interest in improving the Museum's appearance and exhibits for visitors to enjoy.

**Every accomplishment comes with the decision to try!!**

**The author is unknown, and this clipping was attached to a wall in one of the Museum buildings.**

Beware Rail Enthusiast Disease

Highly infectious to males of all ages

The symptoms: The sufferer becomes confused and bewildered when not near a railway. Will be observed wandering around with a blank expression, muttering strange words. Rapid rise in temperature at sight of a train. Behaviour then becomes erratic much rushing about and waving of arms. Foaming at the mouth is not unusual. Is sometimes violent to non-believers. The patient spends much time and money at book and magazine shops. Begins not to notice presence of "normal" people.

This condition is incurable

The treatment: Patient must be kept well supplied with items of railway interest. Should be encouraged to go on steam tours and to open-days where he can meet other victims of the illness and exchange ideas with them. Friends and relations can aid recovery with free transport, free beer, and meals. In case of emergency contact our nearest preservation society.

## Scooters...

The wheel thing! King of the footpaths!  
These classic machines can be seen in the Cottage.



THE



The Gympie & District Historical Society Inc.

215 Brisbane Road, GYMPIE QLD 4570

Postal Address: P O Box 626, GYMPIE QLD 4570

NEWSLETTER