



THE



NEWSLETTER

NO. 102 SEPTEMBER 2016

THE GYMPIE & DISTRICT HISTORICAL SOCIETY INC.

215 Brisbane Road, GYMPIE. QLD 4570

P.O. Box 626, GYMPIE. QLD 4570

(07) 5482 3995, Fax: (07) 54825686

Email: info@gympiegoldmuseum.com.au www.gympiegoldmuseum.com.au

ELECTED OFFICERS

at A.G.M. 3.8.16

President:

Frank Lightfoot

Tel: 54833965

Secretary:

Ralph Richardson

Tel: 54839418

Mob: 0408616709

Treasurer/Editor:

Marilyn Soanes

Tel: 54845211

Senior Vice President:

Max Travis

Tel: 54812157

Mob. 0414015302

Junior Vice President/

Historian:

Allan Blackman

Tel: 54828828

Mob: 0428332291

OTHER POSITIONS HELD:

Property Officer:

& Firearms Licensee

Ron Owen

with **Assistant Jo Carson**

Mob. 0414015302

Historian: Bennett Suthers

Tel. 54823315

Mob. 0412263189

Historian: Chris Kapernick

Museum Markets

at the Duck Ponds (Lake Alford)

1st, 3rd and 5th Sundays of each month

OCTOBER dates: 2ND, 16TH, 30TH

(7 a.m.-12 noon)

Site Bookings to Museum Café 54 823995

Come along and browse the markets

for some bargains and catch up with friends!

The next performance of entertainment

by the Gympie Museum Re-enactment Group

will be 16TH OCTOBER 2016 at 9.30 a.m.

2016 EVENTS:

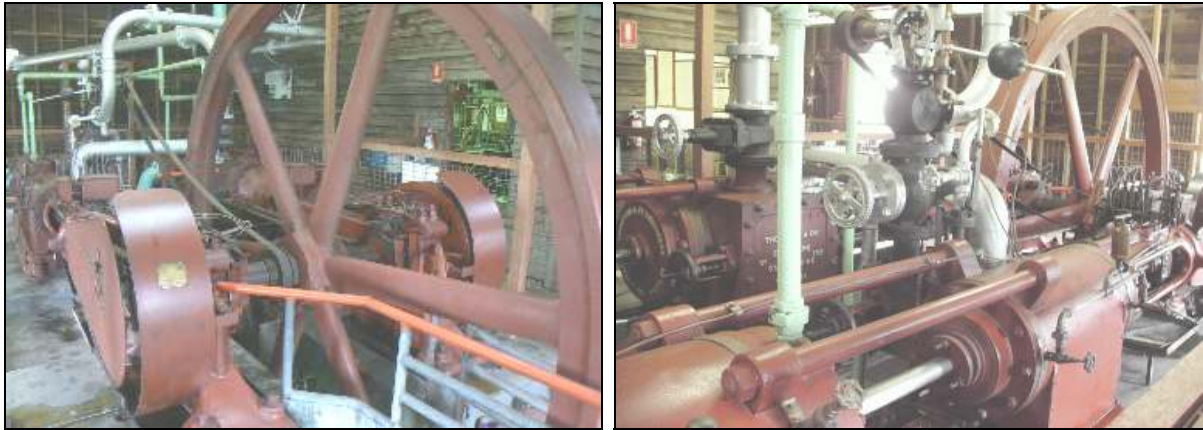
The Heat is on!.....Steaming Day

first Monday of each month

Steam Festival - 1st/2nd/3rd October

THE GENERAL MEETING will be held on **WEDNESDAY 5TH OCTOBER 2016**
at 7.00 p.m. upstairs of the Gold Room. Business includes: Work Projects, Forward Planning

1907 Thompson Cross Compound Air Compressor



This air compressor was first used in Kalgoorlie before being shipped to a south east Queensland rail siding where it was abandoned before being purchased by Toowoomba Foundry. Instead of being melted to produce their own products, it was put into service before being donated to the Society. It is installed on the original footings of a similar but large machine at the No. 2 South Great Eastern Mine shaft.

Steam Festival...

Thankyou's

To Zinc 96.1 FM Radio for their sponsorship of promoting the steam festival

- . For the support from the Wide Bay Historic Machinery and Gympie Historic Auto Club
- . For the loan of a projector from the James Nash High School
- . Courtney for organising the promotion, flyers, facebook etc.

On Saturday, the MC will be James Nash! (Roger Harmon character dressed), and there will be a modest number of stallholders will be placed around the grounds, including the Cooloola Potters Group and the Gympie Gem Club. Other features include: Operation of machinery and a variety of children's activities including miniature train rides.

Variety of food and drinks are available at 'Café at the Museum.

Programme for the Steam Festival to be held on 1st/2nd/3rd October

Saturday 1st

From 9 am to 11 am Small and medium engines, boilers and stampers
11am - 1 pm Winding engine
1.30 pm Official Opening (Cr Daryl Dodt)
2.00 pm Grand Parade
3 pm -5 pm Winding engine
6 pm Meal (Hamburger night at the Café), followed by an old-time great comedy Movie
9 pm close

Sunday 2nd

Market till noon with exhibit on the grounds
1 pm -3 pm Winding engine and medium engines

Monday 3rd

9 am - noon Model, small and medium engines, Stamper
Noon till 3 pm Winding engine

INVITATION to all Members

If you would like to come along and see the historic machinery operating and browse through the Museum at any time, please show your membership card for free entry at the Café, as the new management may not be aware that you are a member.

Davey Paxman Boiler...



On 9th July 2014 the Davey-Paxman boiler and engine were purchased by the Society and arrived by Harveys Towing Services.

Originally the shaft would have a 10 inch (25cm) belt connected to drive each set of stampers, this similar belt system is currently being used.



The gold wash plant was locally made and used at Deep Creek, circa 1940's. This plant washes the alluvial wash and separates the materials from the gold by a rocking and reciprocating motion.

The 2 cylinder Steam Engine powered a bucket dredge 'Grouper' on the Brisbane River.

Chancellor State College (Primary) have visited over three days, as there were a total of 53 students including staff.

This particular group on 2nd September are viewing the operation of the remaining 10 head stampers of the original 80 head stamper.



Markets...

On Sunday 4TH September Vicky and Anthony generously contributed the entire proceeds of their Sausage Sizzle/Bacon & Egg Roll stall to a fundraiser - Jemma Wilson, pictured with her partner, were hands-on to receive their reward! Readers, you may have heard Jemma's name mentioned in the media, and also she is a Gympieite!

Jemma is entering an international 6 day Enduro three ladies team event to be held in Spain. (This Enduro event is motorcycling through the bush). For the last three years the team has won the world's championship, and a different venue is chosen each year. Good luck to the team for this year!!



During the morning of 18th Market, due to rainy conditions, only firing of the canon took place by the Re-enactment Group, and stallholders packed up early for a shorter day.

Museum News..



G150 Celebration next year...

The Society is generally supportive with the idea of artists using the collection as an inspiration for the G150 exhibition. Judy Barass will be curating the exhibition at the Gympie Regional Gallery. On a preliminary visit to the museum, Judy was shown around the site taking photos of exhibits which also included members of the Historical Society Committee Ralph and Marilyn pictured beside the Aveling Barford (Invicta) Road Roller.

This road roller is on loan from Gympie Regional Council.

Thankyou to Allan S. and Frank eminent progress has been undertaken on the gantry maintenance with sanding/painting sleepers, replacing a pole and other timber as required.

This photo on the right shows the extensive replacements that are in progress of being placed into position towards the end of the walkway on the gantry. Once this section is completed, the most southern section will then be started. On-going maintenance of the walkway is important, and will be necessary to repair/replace timber.

Ground Maintenance.... Matt has removed the mass of mother in law tongue that was planted beside the Café, which will make way for possibly a herb garden. Along cement paths mondo grass has been planted as a border, and native plants are being added to the adjoining area. Poor condition metal gold pans have been painted, contents of cacti and succulent plants are placed in a garden bed at the Café as a temporary arrangement while building is in progress. Thankyou to Ralph for the load of mulch - ideal for keeping weeds under control!



Museum News (Cont.)...

- School Holidays activity - Miniature train rides on Monday / Tuesday 11 a.m. and 1 p.m., Thursday 11 a.m.
- * The front entrance is in progress - thank you to the efforts of volunteers Ralph, Chris, Luke, the two Frank's and Matt.
 - * Len assisted by Trevor are keeping the supply of firewood up to the boiler.
 - * The boiler has been operating for school and tour groups, and also demonstrations in the Blacksmith Shop - thanks to Chris for his enthusiasm, and also to Jack for sometimes assisting with the metalwork.
 - * Allan D. has been occupied with checking the mechanical needs of small engines also the 1938 International Truck donated by the Brady family in 1985, and the 1942 International Fire Truck.
 - * Greg has been mainly doing maintenance jobs.
 - * The trailer, and surplus theatre seats have been relocated from the Stamper Shed to storage.
 - * A wind vane has been erected beside the Communications Building.
 - * Incoming donations of exhibits in Max's area have slowed down in recent times.
 - * Numerous old time records from the Breezeway storage are being relocated to under the House storage area with information being entered onto the database by Barry, and he is also assisting with gurneying of paths.
 - * Machinery/equipment in the Implement Shed has been upgraded with interpretive signage by Denise.
 - * Continuation of cleaning in the building, and gurneying of paths by Jo.

**Thank you to all the Museum Volunteers for contributing in some way -
you are improving the Museum appearance and making a difference!**

Driving around the streets of Gympie, I noticed a sign outside a business which read

'Choosing a goal and sticking with it changes everything!' (Ed.)

Readers, did you know Tuesday 13th September was Positive Thinking Day? (Isn't every day! Ed.)

Coming Event... Garage Sale Trail... On Saturday 22nd October

The Museum will be a stallholder ('Going with the Flow') at Gympie's Greatest Garage Sale to be held at the Senior Citizens Centre from 8 a.m. to 1 p.m. The Gympie Regional Council are providing a 3m x 3m site and chair. During the morning there is entertainment with musicians and food will be available.

Information of interest...The Historical Australian Gold Towns are:

NT Darwin 1871; SA -; NSW Bathurst 1851; VIC Bendigo 1851, Ballarat 1851,
Beechworth 1852; **QLD Gympie 1867**; TAS Beaconsfield 1877; WA Kalgoorlie 1893

Café at the Museum...

(Golden Wattle...Floral emblem of Australia) Wattle Day being the first day of spring (1st September) most of the wattle had finished flowering by this time around the area. Cards were on sale in the Café.

Father's Day 4th September - a raffle was held with prizes consisting of a Café voucher, treats for indulgence and books on history of Gympie and gold mining.

There is also a similar plan for celebrating Grand Parents Day on 30th October.

Numerous groups visiting during the month have kept the Tour Guides occupied - 100 Glasshouse Mtn Christian College (1st), Catering for a group of 15 for breakfast (3rd), Fevos Care and Gunther Village, Gayndah Senior groups (5th), 85 Maryborough Central School, 57 St Patrick's Primary School (9th), 60 St Josephs School, Nambour included a Sausage Sizzle (13th), 83 Kawana Waters State College (14th), 29 Two Mile School (16th), Catering for 20 morning teas for a group IRT Men's (20th), 12 Fevos Care senior group (21st), group of 20 Wondai Information Centre (23rd), and a National Senior group (27th).

Christening Robes

The christening robe/gown was a late 18th century innovation usually made of white lawn, muslin or net, longer than the baby and fancier than a day robe. . The design mimicked a more moderate version of contemporary adult fashion.

Most 19th century christening robes featured lace. All, until the end of the century, had low necklines and short sleeves. Victorian society's view of pregnancy and birth ensured these were very private occasions, in contrast to the very public christening ceremony. The Church insisted that babies be christened in a white garment, a symbol of purity and innocence.

Although many women had access to a sewing machine, they preferred to hand-sew the christening gown. Because the gown was small and compact, it could be easily moved around the house from room to room in a needlework bag. The work was decorated with fine white embroidery, and a cap would also have been worn with the gown.

The christening robe would be worn by every baby a mother bore, often handed down through generations becoming a family heirloom. These robes are one of the few pieces of costume history that has survived across a broad range of society.

. In the Christening Robe display case in the Tank, one such garment was made in 1886, machine stitched and used by all ten children (Nellie, Ethel, Alice, Elizabeth, Emeline, Ester, Olive, Florence, Gladys, and Muriel) of the Turner family. They were the daughters of the late Mr George and Mrs Alice Turner. George was born in Adelaide 1862 and died in Gympie 1934, and Alice Staniland was born in England 1867 and died in Gympie 1943. A photo of the family, and a photograph of the Musgrave Road house in Gympie where the Turner family lived from 1885 to 1943 are within the display, and were donated by Mrs Muriel Holmes.

The robe is one metre long and made of white cotton lawn. The bodice and sleeves are broderie anglaise, and the skirt gathered onto the bodice has an insert of broderie anglaise and 5mm pin tucks. Two buttons attach at the back of the bodice with cord ties at the neck and waist. Period 19th century.

. A christening robe crafted for Amy Charlotte Isabelle Petersen, who was the granddaughter of John and Catherine (nee Crick) Edwards, who migrated from Kent in 1835. Amy (nee Edwards) was born on 17th November 1884.

The family advised that this has been worn by many descendants since, as well as Amy's two sisters, Muriel Kidd and Elsie Ackerman, the last being Amy's Great Great Granddaughter, Morgan Amy Ahern, at her Naming Ceremony on 11th January 1997. She was seven weeks old. Period 19th Century.

. The christening robe made about 1880 by tailors, either Mr Henry or Mrs Mary Ann Balthes (Collins) was used by their children (Lillie, William, Carl, Mary Anna, Catherine, Peter Henry, Franc, Otto, John Patrick), and was donated by Mrs M Jamieson.

Gold Rush...

Gold Rush Programme for the Family Fun Day on Saturday 15th October -

Live entertainment all day, lots of activities, food, and market stalls.

11 a.m. Classic Car and Bike Show

4.30 p.m. Gold Rush Family Party Nelson Reserve

4 p.m. Parade down Mary Street

7 p.m. Laser Light Show

The museum will be entering a historic vehicle in the Gold Rush Festival Velmec Street Parade.

THE



The Gympie & District Historical Society Inc.
215 Brisbane Road, GYMPIE QLD 4570
Postal Address: P O Box 626, GYMPIE QLD 4570

NEWSLETTER