



THE



NEWSLETTER

NO. 96 MARCH 2016

**THE GYMPIE & DISTRICT HISTORICAL SOCIETY INC.**

213 Brisbane Road, GYMPIE. QLD 4570

P.O. Box 626, GYMPIE. QLD 4570

(07) 5482 3995, Fax: (07) 54825686

Email: [info@gympiegoldmuseum.com.au](mailto:info@gympiegoldmuseum.com.au) [www.gympiegoldmuseum.com.au](http://www.gympiegoldmuseum.com.au)

**ELECTED OFFICERS  
at A.G.M. 5.8.15**

**President:**

**Frank Lightfoot**

Tel: 54833965

**Secretary:**

**Ralph Richardson**

Tel: 54839418

Mob: 0408616709

**Treasurer/Editor:**

**Marilyn Soanes**

Tel: 54845211

**Senior Vice President/  
Historian:**

**Bennett Suthers**

Tel: 54823315

Mob: 0412263189

**Junior Vice President/  
Historian:**

**Allan Blackman**

Tel: 54828828

Mob: 0428332291

**OTHER POSITIONS HELD:**

**Property Officer:**

**& Firearms Licensee**

**Ron Owen**

with Assistant Jo Carson

**Publicity Officer:**

**Max Travis**

Tel: 54812157

# Museum Markets

1<sup>st</sup>, 3<sup>rd</sup> and 5<sup>th</sup> Sundays of each month

APRIL dates: 3<sup>RD</sup>, 17<sup>TH</sup>

(7 a.m.-12 noon)

Site Bookings to Museum Café 54 823995

Come along and browse the markets  
for some bargains and catch up with friends!

The next performance of entertainment  
by the Gympie Museum Re-enactment Group  
will be 17<sup>TH</sup> APRIL 2016 at 9.30 a.m.

## 2016 EVENTS:

**Monday Steaming Day - 4<sup>th</sup> April**  
**Steam Festival - 1st/2nd/3rd October**

*THE GENERAL MEETING* will be held on **WEDNESDAY 6<sup>TH</sup> APRIL 2016**  
at 7.00 p.m. upstairs of the Gold Room. Business includes: Work Projects, G150

### Imperial Road Roller

As mentioned in the letter below, James (Jim) Coop drove the Imperial Road Roller up until 1944 when he was appointed as charge hand at the Jones Hill pumping station.

**City Council Chambers**  
Gympie, 14<sup>th</sup> Decr. 1926

Mr James Coop

Dear Sir

Your application for driver of Super Diesel Road Roller has been duly accepted conditionally that if you prove capable tis recommended by the Australian Machinery Expert after tuition; also that you undertake to sit for an examination for a second class internal combustion drivers certificate on the first examination available.

You will be duly notified when the Mechanic arrives to instruct you in your duties.

Yours faithfully

..... R Ranson  
Town Clerk



Presently the Road Roller is being revived with repainting work.

**Gympie City Council**  
Town Hall  
Gympie

24<sup>th</sup> October 1944

Dear Sir

With reference to the appointment for the running of the plant at Jones' Hill, I would confirm the arrangement made -

1. That you are in charge temporarily with the understanding that you vacate the charge if and when the Council appoints an Electrical Fitter; otherwise at the pleasure of the Council and of course subject to the satisfactory performance of your duties.
2. It is a condition of this employment that you reside in the cottage at Jones Hill which is rent free.
3. The term of this appointment should be for at least a year and that, satisfactory service being given, you would be eligible to resume your late job of Roller Driver or similar work.
4. The wages to be paid are based on the Award for Motor Attendant - at £5/2/- per week with an addition of £1/1/- per week as responsible charge hand.

Yours faithfully  
W Scott Brownless  
CITY ENGINEER

Mr J Coop  
Pumping Station  
Jones' Hill  
via GYMPIE

## Communications Building...

Fascinating...

On entering the Communications Building, visitors are greeted with the sound from the Crystal Set Radio, which the radio waves pick up the sound by the antenna wire (aerial) visible through the window.

It is suspended from the nearby railway yard tower.

A tree, a pole or a building would be just as effective as an antenna wire support.

There is no battery or other power source required.



Wired for sound!

This receiver is tuned to the low powered (200 watt) local ABC AM broadcast band transmitter just over the hill on Noosa Road, operating on a frequency of 1566 Kilohertz.

The large tuning capacitor and coil are silver plated components from an old broadcast transmitter, but smaller homemade parts work just as well. A crucial component is the detector (diode), a germanium diode, a piece of galena crystal (lead ore), or even an old razor blade.

Instead of the usual headphones, this crystal set has a gramophone horn fitted to an old telephone earpiece to increase the volume so it is more audible.



In the central part of the room, this eye-catching American-English made 35mm film projector dates back to the early 1920's.

It is similar to the one used for the screening of the first Warner Brothers talking movie "The Jazz Singer" starring Al Jolson, which was screened for the first time in Sydney on the 31<sup>st</sup> December 1929.

The room has varying sections from Test Equipment, Broadcasting, Two Way Radios, Amateur Radios, Military Radios to Telegraphic displays.

Intriguing exhibits such as the Morse Code Sounder made by Elliot Brothers (London) Limited, and the Morse Code Key made by PT & EW 1941 were donated by Allan Blackman.

A 1950's-1960's Wheatstone Bridge Test Set used by the PMG Dept. to measure resistance of lines to accurately define was donated by M Iredale.

There are a number of telephones displayed which provides an understanding that there were many updated versions over the years. Along with these are the switchboards which are a wondrous piece of communication, especially when operating one.

A must see of particular interest to locals, is a framed photo of the Gympie Post Office at 34 Duke Street. This heritage listed building opened in 1880, including space for the Post Office, Telegraph Office and accommodation for the Post Master and his family. A telephone exchange was added in 1901, and in 1975 the Post Office function was moved to a more central Mary Street location.

## Musical Instruments...

**What is an Ocarina?** The ocarina is an ancient wind musical instrument—a type of vessel flute. Variations exist, but a typical ocarina is an enclosed space with four to twelve finger holes and a mouthpiece that projects from the body. It is traditionally made from clay or ceramic, but other materials are also used—such as plastic, wood, glass, metal, or bone, and there are also many different styles of ocarinas varying in shape.



**History of an Ocarina** The ocarina belongs to a very old family of instruments, believed to date back over 12,000 years. Ocarina-type instruments have been of particular importance in Chinese cultures, of which the instrument played an important role in their long history of song and dance.

The ocarina went on to become popular in European communities as a toy instrument. The modern European ocarina dates back to the 19th century, when Giuseppe Donati from Budrio, a town near Bologna, Italy transformed the ocarina from a toy, which only played a few notes, into a more comprehensive instrument (known as the first "classical" ocarinas).

**How does an Ocarina work?** Air enters through the windway, strikes the labium, producing sound then vibrates throughout the inside of the ocarina. Covering holes lowers the pitch; uncovering holes raises the pitch.

**Musical Notation** Ocarina music is written in three main ways. The most apparent is the use of sheet music. There are archives of sheet music either specifically written for ocarinas, or adapted from piano sheet music. Since some ocarinas are fully chromatic and can be played in professional musical situations, including classical and folk, sheet music is an ideal notation for ocarinas.

Second is the use of numerical tablature, which expresses the musical notes as numbers. Some makers have developed their own system of numerical tablature for their ocarinas, while others follow a more universal system where numbers correspond to different notes on the scale. This method is typically used by beginners who have not learned to read sheet music.

A third method uses a pictorial tablature similar to the ocarina's finger hole pattern, with blackened holes that represent holes to cover. The tablature represents the holes on the top of the ocarina, and, where necessary, the holes on the underside. This enables easy playing, particularly for beginners.

Info. from Wikipedia



The musical instrument display in the Church building contains an ocarina which was donated by Bill Lanley.

There are many other instruments also, a few are listed below:

- . Flute donated by Mr W R Stalley of Gympie
- . Tin Whistle made by Harlo and donated by Mrs F Anderson
- . Harmonica donated by J Runge, has the inscription re “The Boomerang Tangent Tempered Reeds, Albert’s System.” The box contains a list of 4 “Don’ts”.

Denise is holding a photo taken by Murray Studio Gympie of the Gympie Municipal Mouth Organ Band of 1934, which was recently donated by L Parish. The donors father Bill Smith is 4<sup>th</sup> from the right hand side in the back row.

## Café at the Museum...

Café Under New Management...with their Motto 'Smile it costs nothing!'

Introducing -

Courtney and Vicky are delighted to take on the challenge of this new venture, with friendly customer service high on their list of priorities.

The setting in the dining area has a varied appearance, and the friendly staff welcomes you readers to bring along your friends, to test the waters, so to speak.

Replacement of kitchen equipment included an electric griddle, electric oven, freezer and stainless steel work bench. Other work is also being carried out with upgrading the storeroom.



Cooking scones/muffins/slices in the new oven is a daily occurrence. The selection on the menu includes the All Day Breakfasts, lunch-time favourites of Sandwiches/Wraps, choices of Burgers, Devonshire Teas, and Hot/Cold drinks of your preference. Vegetarian and special needs are catered for. The Kids Menu proves popular along with the extra treats of ice creams for the youngsters. For the customers convenience, an EFTPOS facility is available.

The months ahead will be busy with School Tour Groups, and the guides prefer to manage a minimum of 20 in a group. If the timing is around lunch time, the café staff are offering to provide a sausage sizzle to include in the tour booking.

A few markets have had a slight decrease in stall numbers, most probably due to the weather conditions. The market stall staffed by the café, specialises in egg/bacon rolls and sausage sizzle freshly cooked on site, and there are tables/chairs provided for their customers convenience. A community rest-a-while shady sitting area on the market grounds is intended in the next few weeks.

## New Stock...



The bushranger performance by the Gympie Museum Re-enactment Group DVD is available in the Café priced at \$5. These actors perform on the third Sunday of each month at 9.30 a.m. (except for the months of December and January).

In progress:

- \* Painting and attaching battens under the Church building
- \* Lining of the Café storeroom, Café signage, and joining/ laminating wall maps for the dining area
- \* Restoration of the Aveling Roller is continuing.
- \* Welding of the scroll for the Sturtevant Fan.
- \* Maintenance of the Railway signal tower.
- \* Gantry maintenance is continuing.

**THANKYOU** to Noel, Supervisor of Work for the Dole team , whose six month term has come to an end. Much building maintenance, to mention some are the replacement of the Calico Creek School steps and landing, also steps on the Light Horse building, painting and attaching battens under the Church building, and correcting the pathway paving near the Cottage, and a new path constructed between the Breezeway and Bungawatta Hut have been achieved during this time. Thankyou also for the assistance of the team workers.

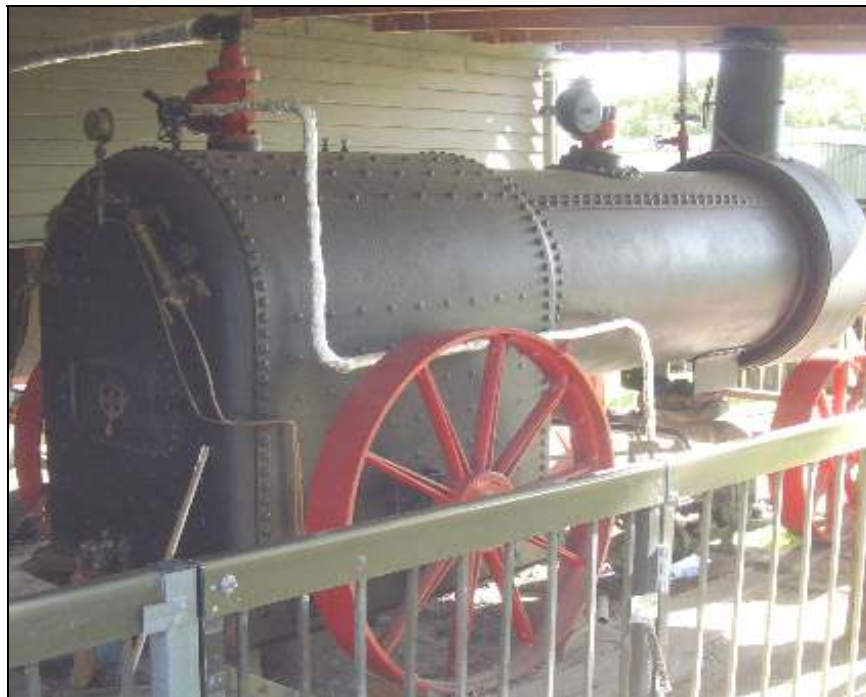
Museum volunteers will be involved in a working display of early pioneer days 'energy' equipment at the Noosa Museum Heritage Festival Day event at Pomona on Saturday, 16th April from 10 a.m. to 3 p.m. and will provide information , as well as promoting/ selling Museum's books etc.

\* For James Nash day, the James Nash State High School had a loan of the gold panning tubs and gold pans for the enthusiastists.

MONDAY STEAMING DAYS

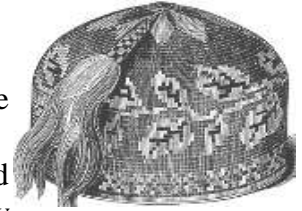
Monday Steaming Days started on 28<sup>th</sup> March (Easter),  
and will continue on the first Monday of each month.

The Davey-Paxman boiler of the colonial era, and related machinery will be operating.



## Smoker's Caps...

Back in the Victorian and Edwardian times from the late 1840s through the 1880s, a Smoking Cap or Lounging Cap was an informal Gentleman's wear, customary after dinner to relax in the living room wearing this head gear that was brightly coloured, ornate, and often bordering on gaudy. They were frequently made at home, and typically fashioned of wool, silk or velvet and topped with a multi-coloured tassel. The Victorian smoking cap showcased a multiplicity of Victorian needlework skills and techniques, (photo shows a 1857 Smoking cap) and it is believed that it was the perfect gift for a young lady to embroider for her fiancé or for a wife to create for her husband.



***THE***



The Gympie & District Historical Society Inc.  
215 Brisbane Road, GYMPIE QLD 4570  
Postal Address: P O Box 626, GYMPIE QLD 4570

***NEWSLETTER***